



Update for Physicians - May 7, 2012

Congratulations to you all! Adoption of an electronic health record is arduous. Our Medical Staff and House Officers have endured tremendous change with great success.

The next phase of the CS-Link journey is “optimization”. This means you will see changes designed to continue to help improve your efficiency.

As always, your suggestions are welcome!

Reminders:

Entering Orders

- When ordering a medication please make every attempt to locate the drug on an order set or order entry list. Do not free text medications, doses, and frequencies in the Administration Instruction or Comment section (F6) of another order.
- To discontinue a medication or procedure, use the “Order Management” activity tab and use the “Discontinue” button. Do not cancel medications or procedures using Administration Instruction or the Comment section (F6) of another order.
- When entering Administration Instructions or Comments (in F6 section) in a medication order composer, please verify your orders with nursing or pharmacy personnel.
- Please do not use Nursing Communication Orders to hold, discontinue medications or to start a new medication.

Printed Prescriptions:

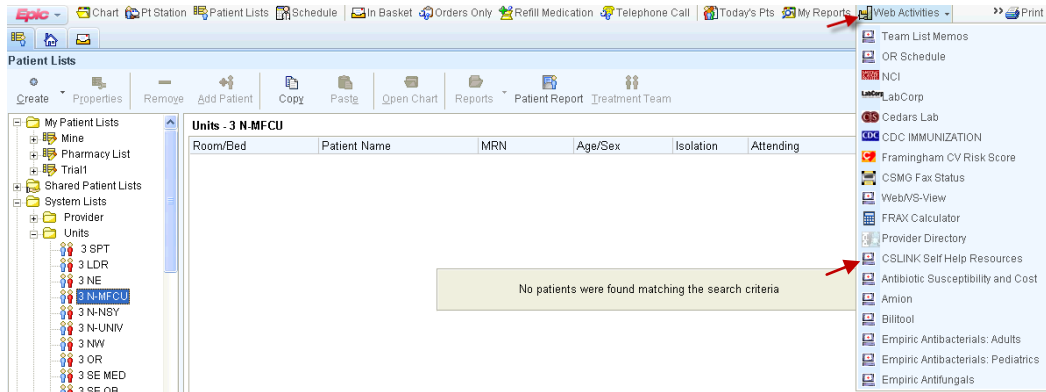
- Physicians need to sign prescriptions when printed on the units. Electronic signatures are NOT in place nor is electronic routing to pharmacies. ePrescribing and eSignature can occur after the upgrade to EPIC version 2010.

“Self Help”

There are two ways to “help yourself” to use CS-Link more effectively:

- 1) Training Updates at CS-Linkcentral.org, <http://www.cslinkcentral.org/>

2) The Web Activities button!



(Attending a workshop is also a great way to improve your CS-Link skills!)

New!

- There is a new navigator to improve the ease of pre and post procedural/surgical orders and documentation. See the Pulse for a review (<http://enewsletter.csmc.edu/Pulse/2012/April-27/New-CS-Link-surgical-and-procedural-navigators.aspx>) or go to the Physician Resource Center (2806) for personalized instruction.

