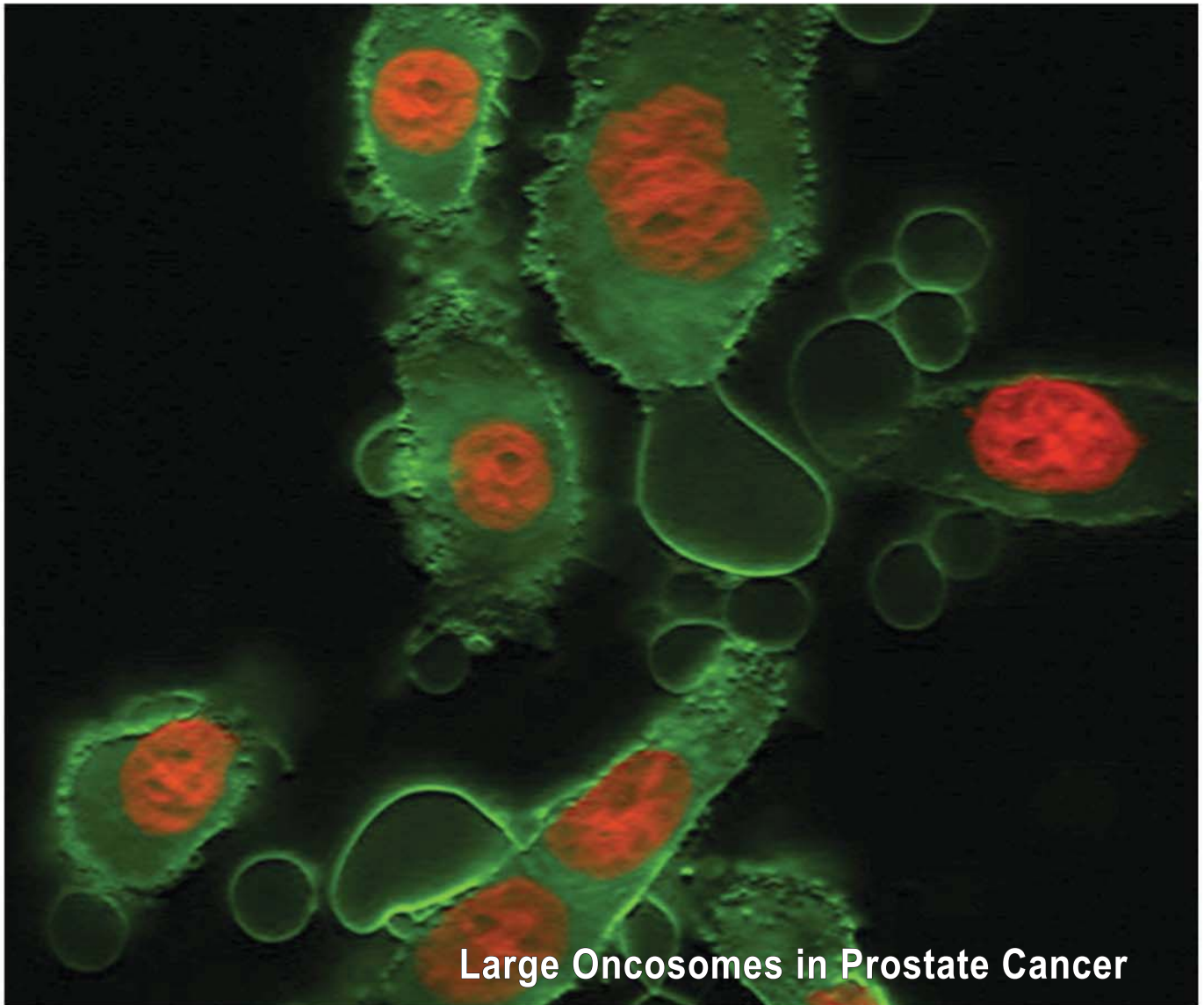


The American Journal of  
**PATHOLOGY**

Cellular and Molecular Biology of Disease



**Large Oncosomes in Prostate Cancer**

**Inside this Issue**

**ASIP Centennial Review** – *Cerebral Malaria: We Have Come a Long Way*

**Commentary** – *NF- $\kappa$ B and Hypoxia: A Double-Edged Sword in Atherosclerosis*

*On the Etiology of Type I Diabetes: A New Animal Model Signifying a Decisive Role for Bacteria Eliciting an Adverse Innate Immunity Response*

*Oncostatin M Is a Growth Factor for Ewing Sarcoma*

---